

LOKAL 100/5

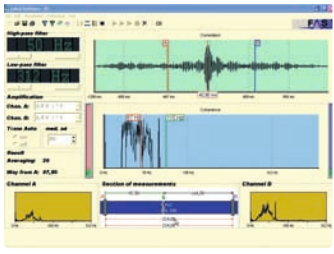


FAST

FTT-Correlator Lokal 100/5 - the latest Method of Leakage Detection

- high-performance correlator
- also convincing on plastic pipes
- automatic leak detection and spotting routine
- integrated automatic rejection of disturbing noises
- frequency analysis (coherence spectrum)

FA.S.T. GmbH
D-74243 Langenbrettach
Bössingerstr. 36
Telefon ++49(0)7946/921 00-0
Telefax ++49(0)7946/71 53
eMail info@fastgmbh.de
www.fastgmbh.de



ISO 9001:2000

FFT-Correlator LOKAL 100/5

Measuring Principle

Operation of the LOKAL Leakage Detection System by F.A.S.T. is based on the technical principle of the frequency-dependent correlation coherence analysis. The pressurized medium inside the pipe generates a discharge-related noise at the leakage spot. This discharge noise propagates to both ends of the pipe section simultaneously and is acquired through sensitive pick-up units at accessible spots such as valves, hydrants, etc. The amplified signal is then radio-transmitted to the coherence correlator and converted into cross power spectrum-compatible data by means of FFT algorithms. Further data processing provides coherence / correlation, which will be displayed on the LOKAL screen.

Advantages of the new LOKAL 100/5 system

- high spotting accuracy for pipes made of steel, cast iron, asbestos, and PVC
- rejection of disturbing noises thanks to the so-called "Comp" feature (developed by F.A.S.T.)
- no misdiggings at reflection spots such as T-junctions, the end of a pipe, or angles, etc.
- easy data evaluation of pipe sections consisting of mixed materials and featuring different diameters
- data reprocessing without any additional measurement procedure possible

The LOKAL 100/5 system is the only FFT correlator on the market not to operate in the time domain and to be equipped with analogue filters. It is the only device of its kind to detect reflecting spots (e.g. T-junctions, angles, etc.) and to specifically reject disturbing noises such as traffic, pumps, water meters, etc.

Where is the LOKAL 100/5 ahead of its competitors?

- coherence function precise indication of the leakage-borne frequency
- dissipation function clear and exact leak spotting routine-developed by the Fraunhofer Institut, Germany
- comfort function automatic leak detection routine
- comp function highly effective rejection of disturbing noises